

"We can handle..."

AMSteel
Port & Steel Operations



AMSTEEL OPERATION REPORT

MV HAMOUDI B Operational Report

M/V HAMOUDI B loaded successfully

• Vessel Name	: MV HAMOUDI B
• Cargo	: Steel Rebar
• Quantity	: 5,100 Bundles / 9,991.6 Ton
• Operation Start	: 1650 31 st of August 2018
• Operation Finish	: 1740 01 st of September 2018
• Vessel Berthing	: 1455 31 st of August 2018
• Vessel Sailing	: 0310 03 th of September 2018
• Equipment Used	: 2 LHM 550 Mobile Harbor Cranes
• Idle Duration	: Total 5 Hours 45 Minutes
• Working Band	: 3 Hours
• Waiting Custom	: 2 Hours 45 Minutes
• Hours Operated	: 24 Hours 50 Minutes
• Net operation	: 19 Hours 05 Minutes
• Actual Performance	: 399 Ton Per Hour / 9,591 Ton Per Day
• Theoretical Performance	: 525 Ton Per Hour / 12,620 Ton Per Day
• Crane Productivity	: % 79

AMSTEEL handled very successfully

MV HAMOUDI B Operational Report

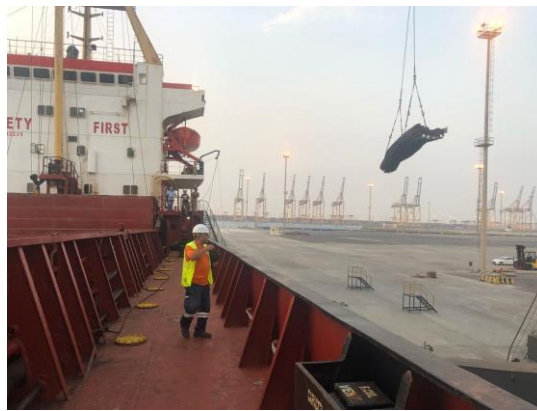
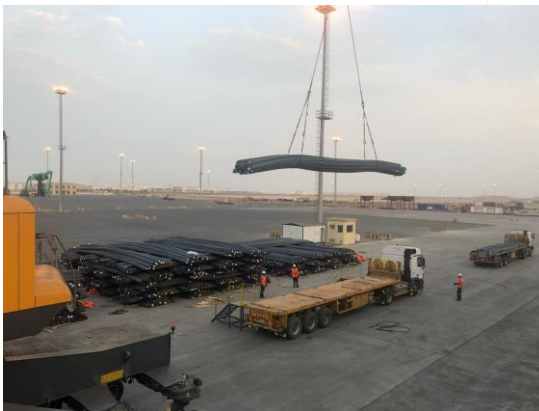
Vessel Berthing



AMSTEEL handled very successfully

MV HAMOUDI B Operational Report

Export Operation



AMSTEEL handled very successfully

MV HAMOUDI B Operational Report

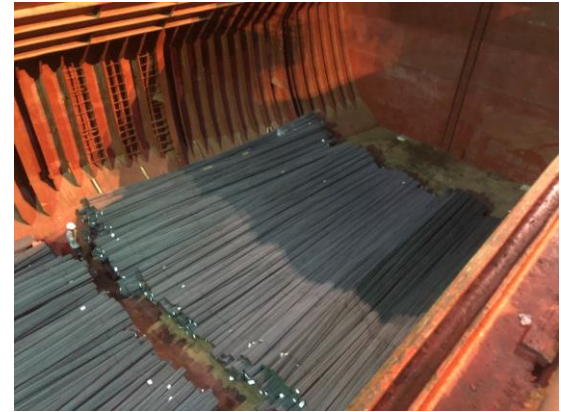
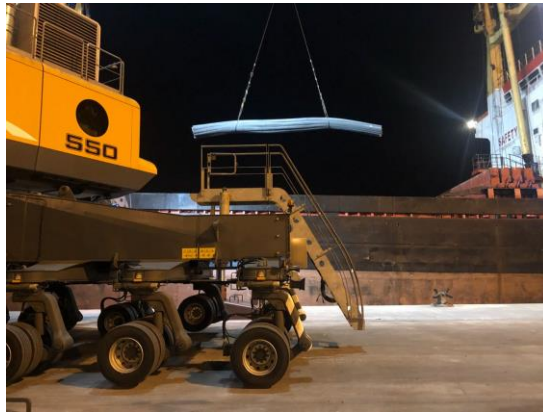
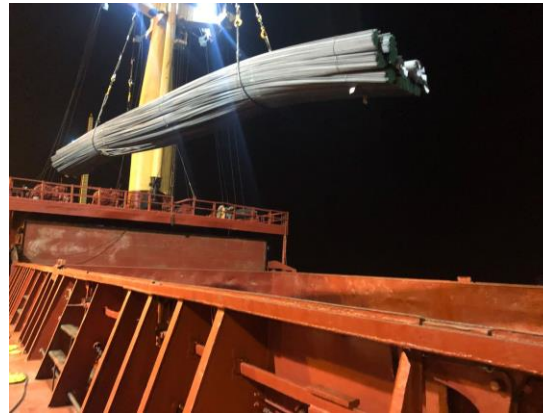
Export Operation



AMSTEEL handled very successfully

MV HAMOUDI B Operational Report

Night Shift operation



AMSTEEL handled very successfully

MV HAMOUDI B Operational Report

Operation Completed



MV HAMOUDI B loaded very successfully



Thank You

Info@amsteel.com

Sales@amsteel.com